



QUALITY CONTROL for MOLECULAR DIAGNOSTICS

The Altum Building, Todd Campus,
West of Scotland Science Park,
Glasgow, G20 0XA
Scotland
Tel: +44 (0) 141 945 6474
Fax: +44 (0) 141 945 5795
www.qcmd.org
info@qcmd.org

Milan Bartos

GeneProof, a.s.
Brno - 61500
Czech Republic.

21 JUL 2010

Laboratory Code: CZ023

Dear Milan Bartos,

QCMD 2010 Hepatitis C virus RNA EQA Programme - Individual Report

Thank you for participating in this QCMD EQA Programme. Please find below the expected results for the programme and your laboratory's performance

The QCMD EQA panels contain a range of samples, designed to look at different aspects of assay performance. Laboratories are expected to correctly analyse and report the core proficiency samples in order to show acceptable proficiency.

Table 1: Expected results of the programme in order of sample content and concentration.

Sample	Sample Content *	Sample conc. **	Sample Status	Sample Type †
HCV10-04	HCV Type 1a	34,594	Frequently detected	Core
HCV10-06	HCV Type 1a	3,556	Frequently detected	Core
HCV10-08	HCV Type 1a	3,459	Frequently detected	Core
HCV10-01	HCV Type 1a	413	Frequently detected	Core
HCV10-03	HCV Type 3a	28,907	Frequently detected	Core
HCV10-05	HCV Type 3a	3,214	Frequently detected	Core
HCV10-02	HCV Type 3a	343	Frequently detected	Core
HCV10-07	HCV Neg Plasma		Negative	Core

* Sample Matrix: Human plasma negative for HCV RNA.

** IU/ml

† Core proficiency Samples : Panel members are designated 'core proficiency samples' on the basis of scientific information, clinical relevance and clinical experience (published literature and professional clinical guidelines) and, where available and appropriate, established target performance limits taken from previous QCMD EQA distributions.

If you have any queries concerning this study please contact William MacKay in the QCMD Neutral Office (neutraloffice@qcmd.org).

Yours Sincerely,

Dr Anton Van Loon
QCMD Executive Co-ordinator



QCMD 2010: The data and report documents provided are intended for the sole use of the participant. It is based on material in our possession or supplied to us, which we believe to be reliable. Whilst every effort has been made to ensure its accuracy, we cannot offer any warranty that factual errors have not occurred. We therefore take no responsibility for any damage or loss that may be suffered by reason of any such inaccuracies.

The QCMD Programme is organised in collaboration with the European Society for Clinical Virology and the European Society for Clinical Microbiology & Infectious Diseases



Registered in Scotland Reg No:
SC219746

Registered Office: 7 Castle Street,
Edinburgh EH2 3AH



1. Analysis of your laboratory's Qualitative EQA data

Dataset code : 1

Date Submitted : 22 APR 10

Analysis of your laboratory's performance on the core proficiency samples:

The core proficiency samples in this EQA programme were:

HCV10-04,HCV10-06,HCV10-08,HCV10-01,HCV10-03,HCV10-05,HCV10-02,HCV10-07

You reported 8/8 (100.0 %) of the core samples correctly.

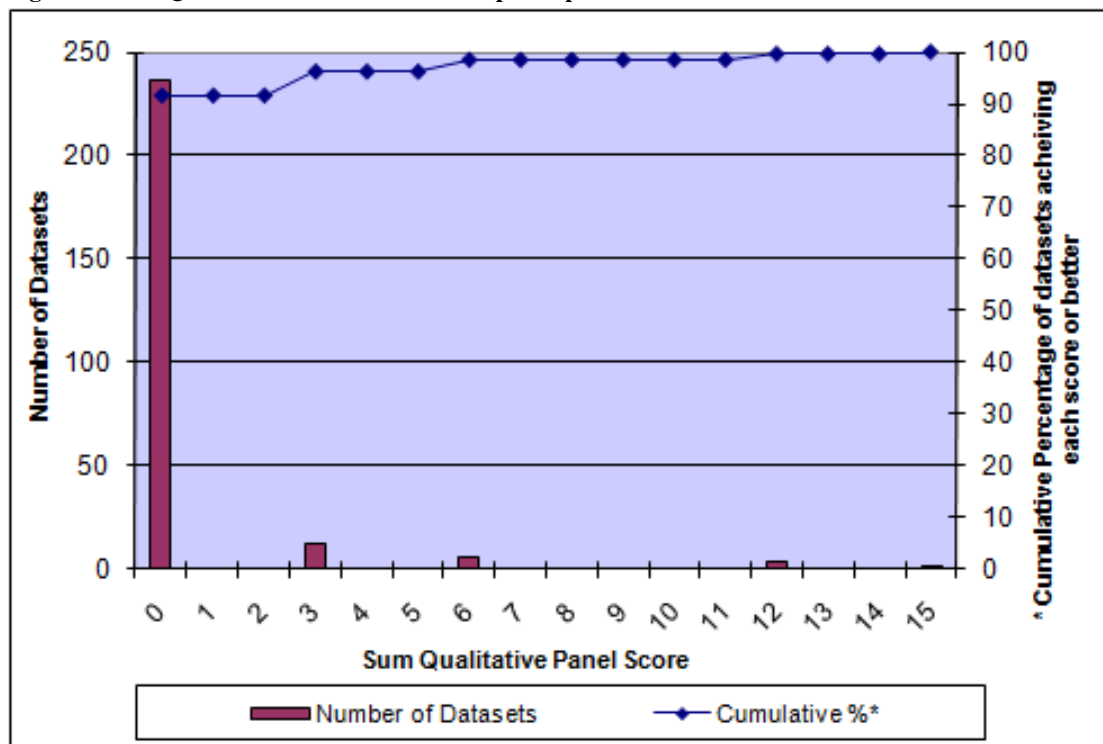
Of the total datasets reported by all participants in this EQA programme, 91.5 % reported correct results for all core proficiency samples.

Analysis of your laboratory's performance on all proficiency samples:

Table 2: Your laboratory's qualitative results and performance scores

Sample	Sample Content	Qualitative			
		Sample Status	Sample Type	Your qualitative result	Your qualitative score
HCV10-04	HCV Type 1a	Frequently detected	Core	positive	0
HCV10-06	HCV Type 1a	Frequently detected	Core	positive	0
HCV10-08	HCV Type 1a	Frequently detected	Core	positive	0
HCV10-01	HCV Type 1a	Frequently detected	Core	positive	0
HCV10-03	HCV Type 3a	Frequently detected	Core	positive	0
HCV10-05	HCV Type 3a	Frequently detected	Core	positive	0
HCV10-02	HCV Type 3a	Frequently detected	Core	positive	0
HCV10-07	HCV Neg Plasma	Negative	Core	negative	0
Sum Qualitative Panel Score					0

Figure 1: Sum Qualitative Panel Scores for all participants



The number of Qualitative datasets analysed : 259

The sum of the Qualitative Panel Score for your dataset is : 0

This maximum score was achieved by : 91.5 % of all datasets

2. Analysis of your laboratory's Quantitative EQA data

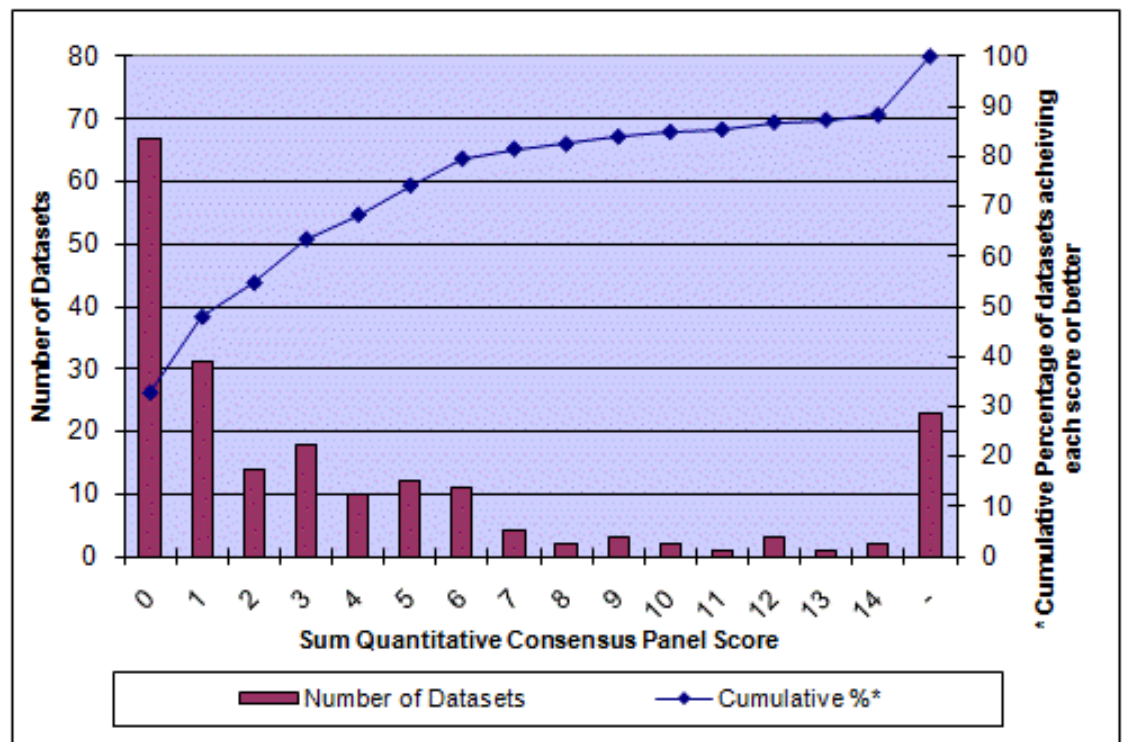
Table 3: Your laboratory's quantitative performance on the paired samples

Paired Samples	Sample Content	Median Difference (log)	Your difference (log)	Within 0.5 log units of the median
HCV10-04 and -06	HCV Type 1a	0.993	0.853	Yes
HCV10-03 and -05	HCV Type 3a	0.940	0.920	Yes

Table 4: Your laboratory's quantitative results and performance scores

Sample	Sample Content	Quantitative		
		Your Result (log)	Your Consensus score	Your Technology score
HCV10-04	HCV Type 1a	4.149	1	1
HCV10-06	HCV Type 1a	3.296	1	1
HCV10-08	HCV Type 1a	3.233	1	1
HCV10-01	HCV Type 1a	2.417	0	1
HCV10-03	HCV Type 3a	4.480	0	0
HCV10-05	HCV Type 3a	3.560	0	0
HCV10-02	HCV Type 3a	2.643	0	0
Sum Quantitative Panel Score			3	4

Figure 2: Sum Quantitative Consensus Panel Scores for all participants



The number of Quantitative datasets analysed : 205

The sum of the Quantitative Consensus Panel Score for your dataset is : 3

This score (or better) was achieved by : 63.1 % of all datasets