



# QUALITY CONTROL for MOLECULAR DIAGNOSTICS

The Altum Building, Todd Campus,  
West of Scotland Science Park,  
Glasgow, G20 0XA  
Scotland  
Tel: +44 (0) 141 945 6474  
Fax: +44 (0) 141 945 5795  
www.qcmd.org  
info@qcmd.org

Milan Bartos

GeneProof, a.s.  
Brno - 61500  
Czech Republic.

02 JUNE 2010

**Laboratory Code: CZ023**

Dear Milan Bartos,

## QCMD 2010 Chlamydomphila pneumoniae & Mycoplasma pneumoniae EQA Programme - Individual Report

Thank you for participating in this QCMD EQA Programme. Please find below the expected results for the programme and your laboratory's performance.

The QCMD EQA panels contain a range of samples, designed to look at different aspects of assay performance. Panel members are designated core proficiency samples on the basis of scientific information, clinical relevance and clinical experience (published literature and professional clinical guidelines) and, where available and appropriate, established target performance limits taken from previous QCMD EQA distributions. Laboratories are expected to correctly analyse and report the core proficiency samples in order to show acceptable proficiency.

**Table 1: Expected results of the programme in order of sample content and concentration.**

Sample	Sample Content *	Sample conc. **	Sample Status	Sample Type †
CP.MP10-02	C. pneumoniae	4.9	Frequently detected (CP)	
CP.MP10-06	C. pneumoniae	4.9	Frequently detected (CP)	
CP.MP10-12	C. pneumoniae	0.49	Frequently detected (CP)	
CP.MP10-03	C. pneumoniae	0.049	Detected (CP)	
CP.MP10-07	C. pneumoniae	4.9	Frequently detected (CP)	
CP.MP10-01	C. pneumoniae	0.49	Detected (CP)	
CP.MP10-10	M. pneumoniae	5000	Frequently detected (MP)	Core
CP.MP10-09	M. pneumoniae	500	Frequently detected (MP)	Core
CP.MP10-05	M. pneumoniae	50	Detected (MP)	
CP.MP10-11	M. pneumoniae	500	Frequently detected (MP)	Core
CP.MP10-08	M. pneumoniae	50	Infrequently Detected (MP)	
CP.MP10-04	CP/MP Negative		Negative	Core

\* STM: Sample Transport Medium; BAL: Human Bronchoalveolar Lavage negative for CP and MP.

\*\* CP: IFU/100µl. MP: CCU/100µl.

† Core proficiency Samples.

If you have any queries concerning this study please contact William MacKay in the QCMD Neutral Office (neutraloffice@qcmd.org).

Yours Sincerely,

**Dr Anton Van Loon**  
QCMD Executive Co-ordinator



QCMD 2010: The data and report documents provided are intended for the sole use of the participant. It is based on material in our possession or supplied to us, which we believe to be reliable. Whilst every effort has been made to ensure its accuracy, we cannot offer any warranty that factual errors have not occurred. We therefore take no responsibility for any damage or loss that may be suffered by reason of any such inaccuracies.

The QCMD Programme is organised in collaboration with the European Society for Clinical Virology and the European Society for Clinical Microbiology & Infectious Diseases



Registered in Scotland Reg No:  
SC219746

Registered Office: 7 Castle Street,  
Edinburgh EH2 3AH



# 1. Analysis of your laboratory's Qualitative EQA data

Dataset code : 1

Date Submitted : 05 MAR 10

The following results are for MP Only.

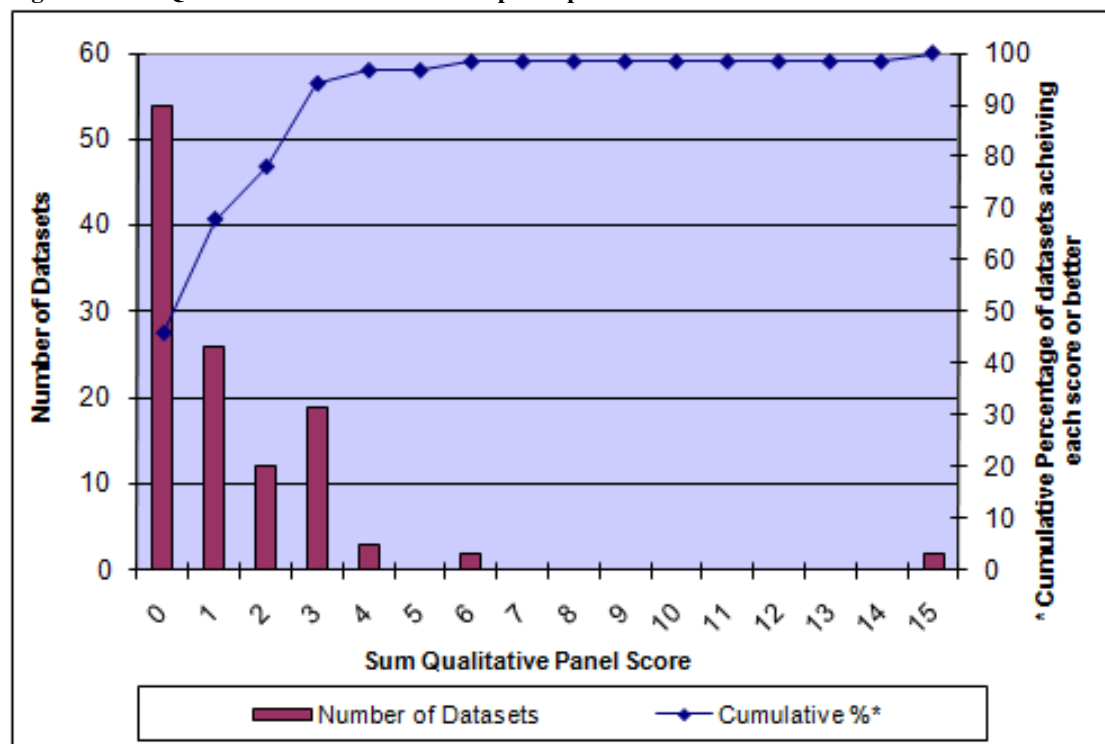
**Analysis of your laboratory's performance on the core proficiency samples:**  
 The core proficiency samples in this EQA programme were: CP.MP10-10,CP.MP10-09,CP.MP10-11,CP.MP10-04  
 You reported 4/4 (100.0%) of the core samples correctly.  
 Of the total datasets reported by all participants in this EQA programme, 94.9 % reported correct results for all core proficiency samples.

## Analysis of your laboratory's performance on all proficiency samples:

**Table 2: Your laboratory's qualitative results and performance scores**

Sample	Sample Content	Qualitative			
		Sample Status	Sample Type	Your qualitative result	Your qualitative score
CP.MP10-02	C. pneumoniae	Frequently detected (CP)		negative	0
CP.MP10-06	C. pneumoniae	Frequently detected (CP)		negative	0
CP.MP10-12	C. pneumoniae	Frequently detected (CP)		negative	0
CP.MP10-03	C. pneumoniae	Detected (CP)		negative	0
CP.MP10-07	C. pneumoniae	Frequently detected (CP)		negative	0
CP.MP10-01	C. pneumoniae	Detected (CP)		negative	0
CP.MP10-10	M. pneumoniae	Frequently detected (MP)	Core	positive	0
CP.MP10-09	M. pneumoniae	Frequently detected (MP)	Core	positive	0
CP.MP10-05	M. pneumoniae	Detected (MP)		positive	0
CP.MP10-11	M. pneumoniae	Frequently detected (MP)	Core	positive	0
CP.MP10-08	M. pneumoniae	Infrequently Detected (MP)		positive	0
CP.MP10-04	CP/MP Negative	Negative	Core	negative	0
Sum Qualitative Panel Score					0

**Figure 1: Sum Qualitative Panel Scores for all participants**



The number of Qualitative datasets analysed : 118

The sum of the Qualitative Panel Score for your dataset is : 0

This maximum score was achieved by : 45.8 % of all datasets