



# QUALITY CONTROL for MOLECULAR DIAGNOSTICS

Block 4, Kelvin Campus,  
West of Scotland Science Park,  
West of Scotland Science Park,  
Glasgow, G20 0SP  
Scotland  
Tel: +44 (0) 141 945 6474  
Fax: +44 (0) 141 945 5795  
www.qcmd.org  
info.org

Ass. Prof. Milan Bartos

GeneProof, a.s.  
Brno - 61500  
Czech Republic.

21 NOV 2008

**Laboratory Code: CZ023**

Dear Ass. Prof. Milan Bartos,

## QCMD 2008 Mycobacterium tuberculosis DNA EQA Programme

Thank you for participating in this QCMD EQA Programme.

**Table 1: Expected results of the programme in order of sample content and concentration.**

Sample	Sample Content *	Sample conc. **	Sample Status
MTB08-03	M. tuberculosis complex	10000	Strong Positive
MTB08-01	M. tuberculosis complex	1000	Positive
MTB08-04	M. tuberculosis complex	1000	Positive
MTB08-05	M. tuberculosis complex	100	Weak Positive
MTB08-02	Mtb Negative		Negative
MTB08-07	M. tuberculosis complex	10000	Strong Positive
MTB08-06	M. tuberculosis complex	1000	Positive
MTB08-10	M. tuberculosis complex	1000	Positive
MTB08-09	M. tuberculosis complex	100	Weak Positive
MTB08-08	Mtb Negative		Negative

\* Samples MTB08-01 to -05 were in Protein Rich Buffer, samples MTB08-06 to -10 were in sputum.

\*\* Cells/vial.

The data presented in this report shows the following for each of the panel samples:

1. Your qualitative results and scores
2. Your quantitative results and scores where applicable

A full description of the Scoring System can be found at [http://www.qcmd.org/QCMD\\_Ind\\_Key.pdf](http://www.qcmd.org/QCMD_Ind_Key.pdf).  
If you have any queries concerning this study please contact William MacKay in the QCMD Neutral Office (neutraloffice@qcmd.org).

Yours Sincerely,

**Dr Anton Van Loon**  
**QCMD Executive Co-ordinator**



QCMD 2008: The data and report documents provided are intended for the sole use of the participant. It is based on material in our possession or supplied to us, which we believe to be reliable. Whilst every effort has been made to ensure its accuracy, we cannot offer any warranty that factual errors have not occurred. We therefore take no responsibility for any damage or loss that may be suffered by reason of any such inaccuracies.

The QCMD Programme is organised in collaboration with the European Society for Clinical Virology and the European Society for Clinical Microbiology & Infectious Diseases



Registered in Scotland Reg No:  
SC219746

Registered Office: 39 Castle Street,  
Edinburgh EH2 3BH



# 1. Analysis of your laboratory's Qualitative EQA data

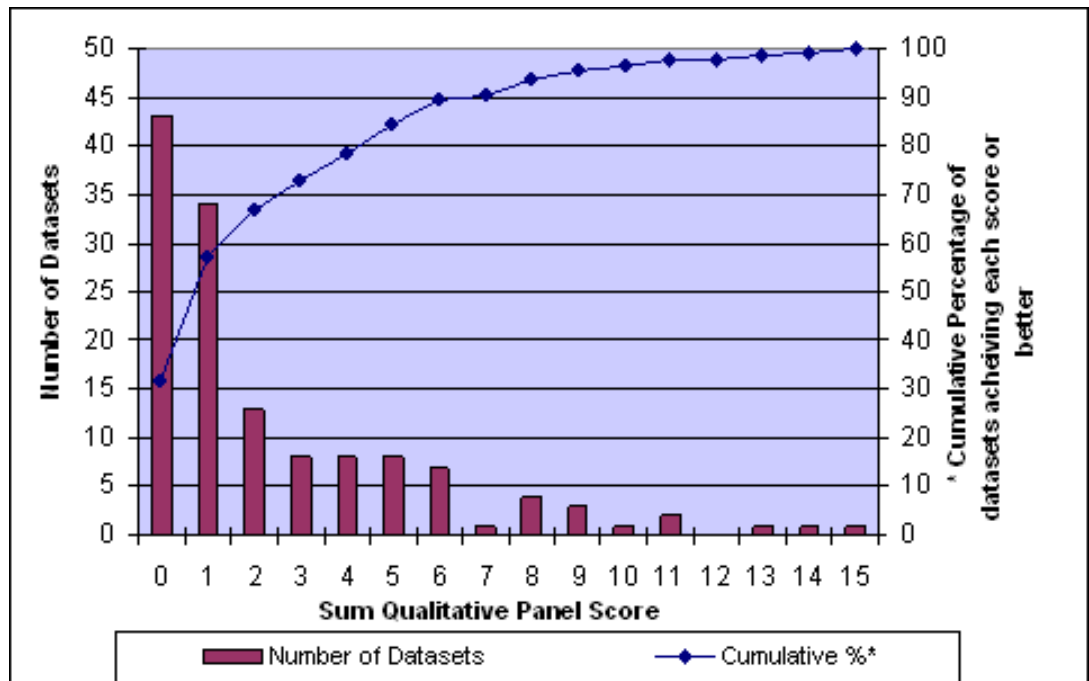
Dataset code : 1

Date Submitted : 01 SEP 08

**Table 2: Your laboratory's qualitative results and performance scores**

Sample	Sample Content	Qualitative		
		Sample Status	Your qualitative result	Your qualitative score
MTB08-03	M. tuberculosis complex	Strong Positive	positive	0
MTB08-01	M. tuberculosis complex	Positive	positive	0
MTB08-04	M. tuberculosis complex	Positive	positive	0
MTB08-05	M. tuberculosis complex	Weak Positive	positive	0
MTB08-02	Mtb Negative	Negative	negative	0
MTB08-07	M. tuberculosis complex	Strong Positive	positive	0
MTB08-06	M. tuberculosis complex	Positive	positive	0
MTB08-10	M. tuberculosis complex	Positive	positive	0
MTB08-09	M. tuberculosis complex	Weak Positive	negative	1
MTB08-08	Mtb Negative	Negative	negative	0
Sum Qualitative Panel Score				1

**Figure 1: Sum Qualitative Panel Scores for all participants**



The number of Qualitative datasets analysed : 135  
 The sum of the Qualitative Panel Score for your dataset is : 1  
 This score (or better) was achieved by : 57.0 % of all datasets