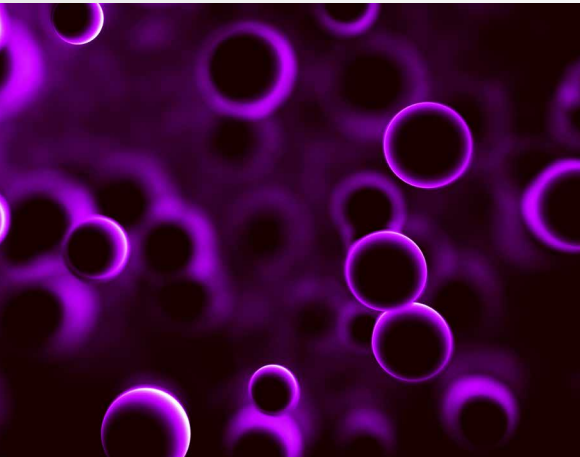




Sexually
Transmitted
Infections

GeneProof

GeneProof Mycoplasma genitalium/hominis PCR Kit



MORE INFORMATION WITH LESS SAMPLES

- Enables to distinguish *Mycoplasma hominis* from *Mycoplasma genitalium* using 3-channel system

UNIVERSAL PCR PROFILE

- Easily combinable with other PCR Kits from the STI group
- Simplifies laboratory workflow

HIGH SENSITIVITY

- Secured by targeting the multicopy sequence of the 16S rRNA gene of *Mycoplasma genitalium*

CONTAMINATION ELIMINATION

- Ready-to-Use Master Mix contains Uracil-DNA glycosylase (UNG) and dUTPs eliminating contamination with amplification products



COMPATIBLE WITH A WIDE RANGE OF REAL-TIME PCR DEVICES



CERTIFIED DIAGNOSTIC TEST

www.geneproof.com

GUARANTEED CONTROL OVER THE COMPLETE PROCESS OF DEVELOPMENT, MANUFACTURING AND DISTRIBUTION OF ALL THE OFFERED GENEPROOF PRODUCTS



GeneProof Mycoplasma genitalium/ hominis PCR Kit

- + CT/NG/MG Multiplex PCR Kit
- + Mycoplasma genitalium/hominis PCR Kit
- + Herpes Simplex Virus 1 (HSV-1) PCR Kit
- + Chlamydia trachomatis PCR Kit
- + Human Papillomavirus (HPV) PCR Kit
- + Herpes Simplex Virus 2 (HSV-2) PCR Kit
- + Neisseria gonorrhoeae PCR Kit
- + Ureaplasma PCR Kit
- + Herpes Simplex Virus (HSV-1/2) PCR Kit

TECHNOLOGY	real-time PCR
TYPE OF ANALYSIS	qualitative
TARGET SEQUENCE	a multicopy sequence of the gene encoding the 16S rRNA (<i>M. genitalium</i>) and the housekeeping gene <i>gap</i> for glyceraldehyde-3-phosphate dehydrogenase (<i>M. hominis</i>)
ANALYTICAL SPECIFICITY	<i>M. genitalium</i> , 100 % <i>M. hominis</i> , 100 %
ANALYTICAL SENSITIVITY (LOD)	reaches up to 1.256 cp/μl with the probability 95 % for <i>M. genitalium</i> reaches up to 1.196 cp/μl with the probability 95 % for <i>M. hominis</i>
EXTRACTION/INHIBITION CONTROL	PCR inhibition and DNA extraction efficiency control (ISEX version)
VALIDATED SPECIMEN	swab, urine
STORAGE	-20 ± 5 °C
VALIDATED EXTRACTION METHODS	croBEE NA16 Nucleic Acid Extraction System GeneProof PathogenFree DNA Isolation Kit
INSTRUMENTS	croBEE Real-Time PCR System* AriaMx Real-Time PCR System CFX Connect™ ** / CFX96™/ Dx Real-Time PCR Detection System LineGene 9600 / 9600 Plus Rotor-Gene 3000 / 6000 ** / Q SLAN® Real-Time PCR System
REQUIRED DETECTION CHANNELS	FAM, HEX, Cy5
EXTERNAL QUALITY ASSESSMENT	Regularly tested by QCMD and Instand e.V. External Quality Assessment Panels - results at www.geneproof.com
REGULATORY STATUS	CE IVD

* Validated instruments

** The kit requires three detection channels. On instruments with two detection channels the kit detects the *M. genitalium* presence only.

PRODUCT NAME	TECHNOLOGY	ORDER NO.		
		25 REACTIONS	50 REACTIONS	100 REACTIONS
GeneProof Mycoplasma genitalium/hominis PCR Kit	real-time PCR	MGH/ISEX/025	MGH/ISEX/050	MGH/ISEX/100