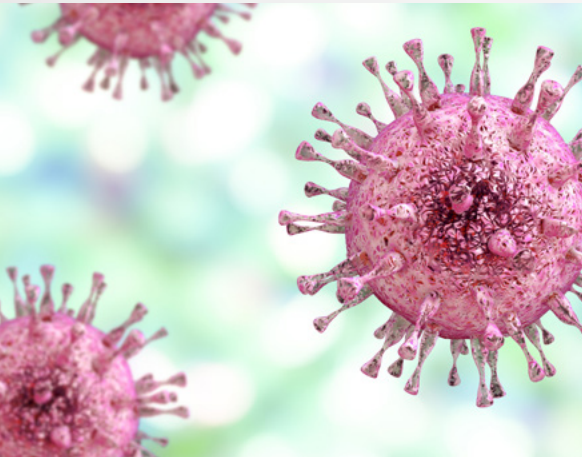




GeneProof

GeneProof Human Herpesvirus 6/7 (HHV-6/7) PCR Kit



MORE INFORMATION WITH LESS SAMPLES

- PCR Kit detects both viruses in a single reaction tube

QUANTITATIVE DETECTION OF BOTH VIRUSES

- Precise quantification of the both viruses in two separate detection channels

HIGH SENSITIVITY AND TRACEABILITY

- Sensitivity was established with WHO certified strain

CONTAMINATION ELIMINATION

- Ready-to-Use Master Mix contains Uracil-DNA glycosylase (UNG) and dUTPs eliminating contamination with amplification products



COMPATIBLE WITH A WIDE
RANGE OF REAL-TIME PCR
DEVICES



CERTIFIED
DIAGNOSTIC TEST



GeneProof Human Herpesvirus 6/7 (HHV-6/7) PCR Kit

- + Human Herpesvirus 6/7 (HHV-6/7) PCR Kit
- + Herpes Simplex Virus 1 (HSV-1) PCR Kit
- + Aspergillus PCR Kit
- + Cytomegalovirus (CMV) PCR Kit
- + Herpes Simplex Virus 2 (HSV-2) PCR Kit
- + BK/JC Virus (BK/JC) PCR Kit
- + Epstein-Barr Virus (EBV) PCR Kit
- + Herpes Simplex Virus (HSV-1/2) PCR Kit
- + Parvovirus B19 PCR Kit
- + Varicella Zoster Virus (VZV) PCR Kit
- + Human Herpesvirus 8 (HHV-8) PCR Kit

TECHNOLOGY	real-time PCR
TYPE OF ANALYSIS	Qualitative and quantitative test
TARGET SEQUENCE	Specific HHV-6A/B DNA sequence of U94 gene coding the putative integrase Rep68. Specific HHV-7 DNA sequence of U57 gene coding major capsid protein
ANALYTICAL SPECIFICITY	Human Herpesvirus 6/7 (HHV-6/7), 100 %
ANALYTICAL SENSITIVITY (LOD)	reaches up to 152.05 IU/ml with the probability of 95 % (on NIBSC HHV6B 15/266 using manual extraction GeneProof PathogenFree DNA Isolation Kit) reaches up to 304.91 IU/ml with the probability of 95 % (on (NIBSC HHV6B 15/266 using automatic extraction croBEE NA16 Nucleic Acid Extraction System)
LINEAR RANGE	10 ¹⁰ - 10 ^{2.5} IU/ml with precision of ± 0.5 log (using manual extraction GeneProof PathogenFree DNA Isolation Kit or automatic extractor croBEE NA16 Nucleic Acid Extraction System)
DYNAMIC RANGE	10 ¹⁰ - 152.05 IU/ml (using manual extraction GeneProof PathogenFree DNA Isolation Kit) 10 ¹⁰ - 304.91 IU/ml (using automatic extractor croBEE NA16 Nucleic Acid Extraction System)
REPORTING UNITS	IU/ml
METROLOGICAL TRACEABILITY	NIBSC HHV6B 15/266
EXTRACTION/INHIBITION CONTROL	PCR inhibition and DNA extraction efficiency control (Internal standard)
VALIDATED SPECIMEN	CSF, plasma, whole blood* * Qualitative PCR DNA test on whole blood is useless for differentiating active from latent HHV-6/7 infection. Almost all healthy individuals have low levels of latent HHV-6 in the whole blood. Therefore, is highly recommended to perform repeated quantification of HHV-6/7 viral loads in the whole blood on consecutive specimens using the same extraction method and quantitative PCR assay for given patient to differentiate active (increasing trend of viral load) from latent (stable or below LoD) HHV-6/7 infection.
STORAGE	-20 ± 5 °C
VALIDATED EXTRACTION METHODS	croBEE NA16 Nucleic Acid Extraction System GeneProof PathogenFree DNA Isolation Kit
INSTRUMENTS	croBEE Real-Time PCR System* Applied Biosystems 7500 Real-Time PCR System CFX96™/ Dx Real-Time PCR Detection System LightCycler 480 LineGene 9600 Plus Mic qPCR Cyler
REQUIRED DETECTION CHANNELS	FAM, HEX, Cy5
EXTERNAL QUALITY ASSESSMENT	regularly tested by QCMD and Instand e.V. External Quality Assessment Panels - results at www.geneproof.com
REGULATORY STATUS	CE IVD

* Validated instruments

PRODUCT NAME	TECHNOLOGY	ORDER NO.		
		25 REACTIONS	50 REACTIONS	100 REACTIONS
GeneProof Human Herpesvirus 6/7 PCR Kit	real-time PCR	HHV/ISEX/025	HHV/ISEX/050	HHV/ISEX/100