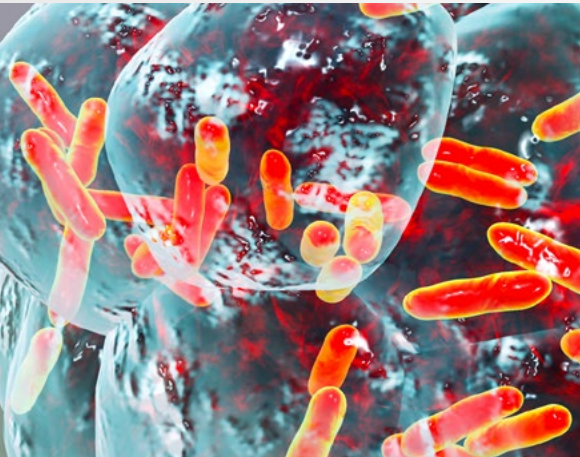




# GeneProof

## GeneProof *Bordetella pertussis*/ *parapertussis* PCR Kit



### MORE INFORMATION WITH LESS SAMPLES

- Detects and distinguishes *Bordetella pertussis* and *Bordetella parapertussis* in a single reaction tube

### UNIVERSAL PCR PROFILE

- Easily combinable with other PCR kits from the Respiratory Infections group, especially with GeneProof *Mycoplasma pneumoniae* PCR Kit and GeneProof *Chlamydia pneumoniae* PCR Kit
- Simplifies laboratory workflow

### HIGHLY SPECIFIC DETECTION

- Amplification of the multi-copy insertion sequences IS1002 (specific for both *Bordetella pertussis*/*parapertussis*) and IS1001 (specific only for *B. parapertussis*)
- No false positive results for *Bordetella holmesii*

### CONTAMINATION ELIMINATION

- Ready-to-Use Master Mix contains Uracil-DNA glycosylase (UNG) and dUTPs eliminating possible contamination with amplification products



COMPATIBLE WITH A WIDE RANGE OF REAL-TIME PCR DEVICES



CERTIFIED DIAGNOSTIC TEST



# GeneProof Bordetella pertussis/ parapertussis PCR Kit

- + GeneProof Adenovirus PCR Kit
- + GeneProof Aspergillus PCR Kit
- + GeneProof Bordetella pertussis/  
parapertussis PCR Kit
- + GeneProof Enterovirus PCR Kit
- + GeneProof Chlamydia pneumoniae PCR Kit
- + GeneProof Legionella pneumophila PCR Kit
- + GeneProof Flu Multiplex PCR Kit
- + GeneProof Mycoplasma pneumoniae PCR Kit
- + GeneProof Mycobacterium tuberculosis PCR Kit

TECHNOLOGY	real-time PCR
TYPE OF ANALYSIS	qualitative
TARGET SEQUENCE	the multi-copy insertion sequences IS1002 (specific for both <i>Bordetella pertussis/parapertussis</i> ) and IS1001 (specific only for <i>B. parapertussis</i> )
ANALYTICAL SPECIFICITY	<i>B. pertussis</i> , 100 % <i>B. parapertussis</i> , 100 %
ANALYTICAL SENSITIVITY (LOD)	reaches up to 0.212 cp/μl with the probability 95% (on Amplirun <sup>®</sup> Bordetella pertussis DNA control, Vircell)
EXTRACTION/INHIBITION CONTROL	PCR inhibition and DNA extraction efficiency control (ISEX version)
VALIDATED SPECIMEN	aspirate, sputum, swab
STORAGE	-20 ± 5 °C
VALIDATED EXTRACTION METHODS	croBEE NA16 Nucleic Acid Extraction System GeneProof PathogenFree DNA Isolation Kit
INSTRUMENTS	croBEE Real-Time PCR System* AriaMx Real-Time PCR System CFX96™ / Dx Real-Time PCR Detection System LightCycler <sup>®</sup> 480 LineGene 9600 / 9600 Plus Mic qPCR Cyclers QuantStudio™ 5 Real-Time PCR System Rotor-Gene 3000 / Q SLAN <sup>®</sup> Real-Time PCR System
REQUIRED DETECTION CHANNELS	FAM, HEX, Cy5
EXTERNAL QUALITY ASSESSMENT	regularly tested by QCMD and Instand e.V. External Quality Assessment panels - for results see <a href="http://www.geneproof.com">www.geneproof.com</a>
REGULATORY STATUS	CE IVD

\*Validated instruments

PRODUCT NAME	TECHNOLOGY	ORDER NO.		
		25 REACTIONS	50 REACTIONS	100 REACTIONS
GeneProof Bordetella pertussis/parapertussis PCR Kit	real-time PCR	BP/ISEX/025	BP/ISEX/050	BP/ISEX/100