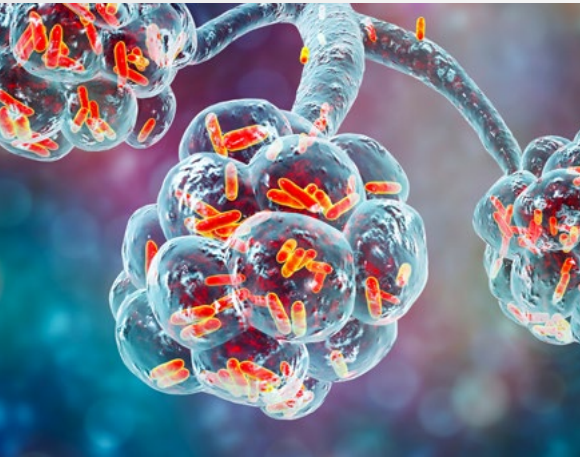




# GeneProof

## GeneProof Mycoplasma pneumoniae PCR Kit



### HIGH SENSITIVITY AND SPECIFICITY

- Secured by targeting the multicopy sequence of the *M181* gene

### CONTAMINATION ELIMINATION

- Ready-to-Use Master Mix contains Uracil-DNA glycosylase (UNG) and dUTPs eliminating possible contamination with amplification products

### UNIVERSAL PCR PROFILE

- Enables rapid and sensitive detection of disease-causing agents of atypical pneumoniae
- Beneficial in combination with GeneProof Chlamydia pneumoniae PCR Kit and GeneProof Bordetella pertussis/parapertussis PCR Kit
- Simplifies laboratory workflow



COMPATIBLE WITH A WIDE RANGE OF REAL-TIME PCR DEVICES



CERTIFIED DIAGNOSTIC TEST



# GeneProof *Mycoplasma pneumoniae* PCR Kit

- + GeneProof Adenovirus PCR Kit
- + GeneProof Aspergillus PCR Kit
- + GeneProof Bordetella pertussis/  
parapertussis PCR Kit
- + GeneProof Enterovirus PCR Kit
- + GeneProof Chlamydia pneumoniae PCR Kit
- + GeneProof Legionella pneumophila PCR Kit
- + GeneProof Flu Multiplex PCR Kit
- + GeneProof Mycoplasma pneumoniae PCR Kit
- + GeneProof Mycobacterium tuberculosis PCR Kit

TECHNOLOGY	real-time PCR
TYPE OF ANALYSIS	qualitative
TARGET SEQUENCE	the <i>M181</i> gene encoding the CARDS toxin
ANALYTICAL SPECIFICITY	<i>Mycoplasma pneumoniae</i> , 100%
ANALYTICAL SENSITIVITY (LOD)	reaches up to <b>0.46 cp/μl</b> with the probability of 95 %
EXTRACTION/INHIBITION CONTROL	PCR inhibition and DNA extraction efficiency control (ISEX version)
VALIDATED SPECIMEN	BAL, sputum, swab
STORAGE	-20 ± 5 °C
VALIDATED EXTRACTION METHODS	croBEE NA16 Nucleic Acid Extraction System GeneProof PathogenFree DNA Isolation Kit
INSTRUMENTS	croBEE Real-Time PCR System* Applied Biosystems 7300 / 7500 Real-Time PCR System AriaMx Real-Time PCR System CFX Connect™ / CFX96™/ Dx Real-Time PCR Detection System LightCycler <sup>®</sup> 2.0 / 480 LineGene 9600 / 9600 Plus Mic qPCR Cycler QuantStudio™ 3 / 5 Real-Time PCR System Rotor-Gene 3000 / 6000 / Q SLAN <sup>®</sup> Real-Time PCR System StepOne™ / StepOnePlus™ Real-Time PCR System
REQUIRED DETECTION CHANNELS	FAM, HEX
EXTERNAL QUALITY ASSESSMENT	regularly tested by QCMD and Instand e.V. External Quality Assessment Panels - results at <a href="http://www.geneproof.com">www.geneproof.com</a>
REGULATORY STATUS	CE IVD

\* Validated instruments

PRODUCT NAME	TECHNOLOGY	ORDER NO.		
		25 REACTIONS	50 REACTIONS	100 REACTIONS
GeneProof <i>Mycoplasma pneumoniae</i> PCR Kit	real-time PCR	MP/ISEX/025	MP/ISEX/050	MP/ISEX/100