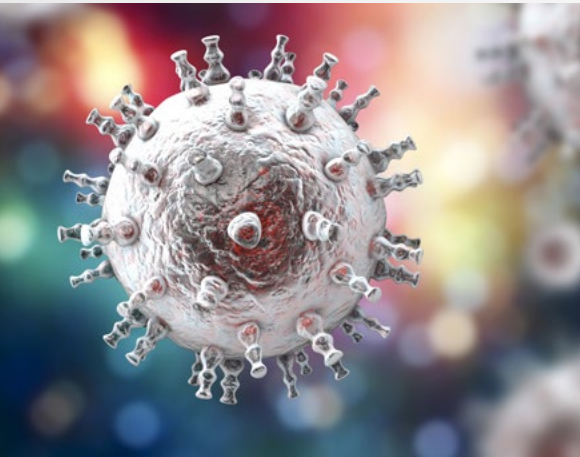




GeneProof

GeneProof Human Herpesvirus 8 (HHV-8) PCR Kit



DUAL TARGET DETECTION

- Dual targeting prevents a detection failure caused by the occurrence of mutations

UNIVERSAL PCR PROFILE

- Easily combinable with other PCR kits from the Immunocompromised / Transplanted group
- Simplifies laboratory workflow

QUALITATIVE AND QUANTITATIVE DETECTION

- Unique possibility to quantify viral load

CONTAMINATION ELIMINATION

- Ready-to-Use Master Mix contains Uracil-DNA glycosylase (UNG) and dUTPs eliminating possible contamination with amplification products



COMPATIBLE WITH A WIDE
RANGE OF REAL-TIME PCR
DEVICES



CERTIFIED
DIAGNOSTIC TEST



GeneProof Human Herpesvirus 8 (HHV-8) PCR Kit

- + Human Herpesvirus 6/7 (HHV-6/7) PCR Kit
- + Herpes Simplex Virus 1 (HSV-1) PCR Kit
- + Aspergillus PCR Kit
- + Cytomegalovirus (CMV) PCR Kit
- + Herpes Simplex Virus 2 (HSV-2) PCR Kit
- + BK/JC Virus (BK/JC) PCR Kit
- + Epstein-Barr Virus (EBV) PCR Kit
- + Herpes Simplex Virus (HSV-1/2) PCR Kit
- + Parvovirus B19 PCR Kit
- + Varicella Zoster Virus (VZV) PCR Kit
- + Human Herpesvirus 8 (HHV-8) PCR Kit

TECHNOLOGY	real-time PCR
TYPE OF ANALYSIS	qualitative and quantitative
TARGET SEQUENCE	specific conservative DNA sequence of the <i>ORF26</i> gene encoding the minor capsid protein (mCP) specific conservative DNA sequence of the <i>ORF73</i> gene encoding the latency-associated nuclear antigen (LANA)
ANALYTICAL SPECIFICITY	Human herpesvirus 8, 100%
ANALYTICAL SENSITIVITY (LOD)	reaches up to 2.225 cp/μl with the probability of 95%
LINEAR RANGE	10 ⁹ - 10 ³ cp/ml with precision of ± 0.5 log
REPORTING UNITS	cp/μl
CONVERSION FACTOR	not applicable
METROLOGICAL TRACEABILITY	not applicable
EXTRACTION/INHIBITION CONTROL	PCR inhibition and DNA extraction efficiency control (ISEX version)
VALIDATED SPECIMEN	CSF, plasma, saliva, whole blood
STORAGE	-20 ± 5 °C
VALIDATED EXTRACTION METHODS	croBEE NA16 Nucleic Acid Extraction System GeneProof PathogenFree DNA Isolation Kit
INSTRUMENTS	croBEE Real-Time PCR System* Applied Biosystems 7300 / 7500 Real-Time PCR System CFX Connect™ / CFX96™ / Dx Real-Time PCR Detection System LightCycler® 480 LineGene 9600 / 9600 Plus Mic qPCR Cyclers QuantStudio™ 5 Real-Time PCR System Rotor-Gene 3000 / 6000 / Q SLAN® Real-Time PCR System StepOne™ / StepOnePlus™ Real-Time PCR System
REQUIRED DETECTION CHANNELS	FAM, HEX
EXTERNAL QUALITY ASSESSMENT	regularly tested by QCMD and Instand e.V. External Quality Assessment Panels - results at www.geneproof.com
REGULATORY STATUS	CE IVD

*Validated instruments

PRODUCT NAME	TECHNOLOGY	ORDER NO.		
		25 REACTIONS	50 REACTIONS	100 REACTIONS
GeneProof Human Herpesvirus 8 (HHV-8) PCR Kit	real-time PCR	HHV8/ISEX/025	HHV8/ISEX/050	HHV8/ISEX/100