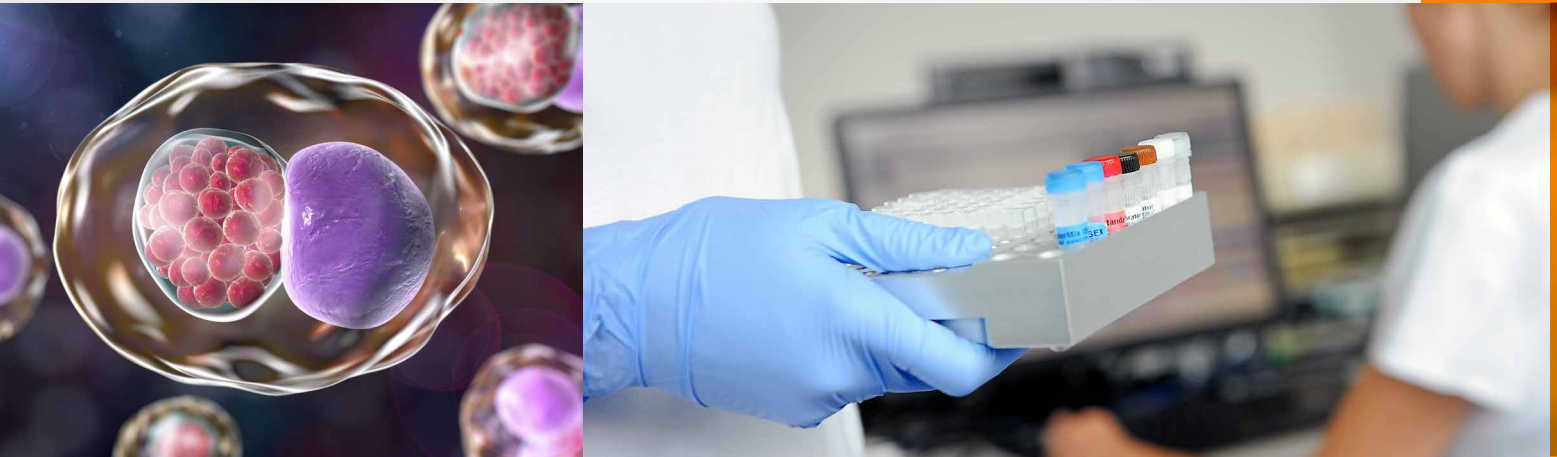




# GeneProof

## GeneProof Chlamydia trachomatis PCR Kit



### DUAL TARGET DETECTION

- Dual target detection of the 16S rRNA gene and a cryptic plasmid

### HIGH SENSITIVITY

- Secured by targeting the multicopy sequence of the 16S rRNA gene

### RELIABLE DETECTION OF SWEDISH VARIANT OF C. TRACHOMATIS

- Elimination of false-negative results caused by a sequence variation in the cryptic plasmid

### CONTAMINATION ELIMINATION

- Ready-to-Use Master Mix contains Uracil-DNA glycosylase (UNG) and dUTPs eliminating contamination with amplification products



COMPATIBLE WITH A WIDE RANGE OF REAL-TIME PCR DEVICES



CERTIFIED DIAGNOSTIC TEST



# GeneProof Chlamydia trachomatis PCR Kit

- + CT/NG/MG Multiplex PCR Kit
- + Mycoplasma genitalium/hominis PCR Kit
- + Herpes Simplex Virus 1 (HSV-1) PCR Kit
- + Chlamydia trachomatis PCR Kit
- + Human Papillomavirus (HPV) PCR Kit
- + Herpes Simplex Virus 2 (HSV-2) PCR Kit
- + Neisseria gonorrhoeae PCR Kit
- + Ureaplasma PCR Kit
- + Herpes Simplex Virus (HSV-1/2) PCR Kit

<b>TECHNOLOGY</b>	real-time PCR
<b>TYPE OF ANALYSIS</b>	qualitative
<b>TARGET SEQUENCE</b>	the cryptic plasmid multi-copy sequence and the 16S rRNA gene
<b>ANALYTICAL SPECIFICITY</b>	<i>Chlamydia trachomatis</i> , including mutations with deletions in cryptic plasmid (including Swedish variant), 100 %
<b>ANALYTICAL SENSITIVITY (LOD)</b>	reaches up to 0.075 cp/μl with the probability of 95 % (on Amplirun® <i>Chlamydia trachomatis</i> DNA control, Vircell)
<b>DIAGNOSTIC SPECIFICITY</b>	99.21 % (CI <sub>95%</sub> : 99.07 % - 99.34 %)
<b>DIAGNOSTIC SENSITIVITY</b>	100 % (CI <sub>95%</sub> : 99.58 % - 100 %)
<b>EXTRACTION/INHIBITION CONTROL</b>	PCR inhibition and DNA extraction efficiency control (ISEX version)
<b>VALIDATED SPECIMEN</b>	sperm, swab, urine
<b>STORAGE</b>	-20 ± 5 °C
<b>VALIDATED EXTRACTION METHODS</b>	croBEE NA16 Nucleic Acid Extraction System GeneProof PathogenFree DNA Isolation Kit
<b>INSTRUMENTS</b>	croBEE Real-Time PCR System* Applied Biosystems 7300 / 7500 Real-Time PCR System AriaMx Real-Time PCR System CFX Connect™ / CFX96™ / Dx Real-Time PCR Detection System DTlite Real-Time PCR System LightCycler® 2.0 / 480 LineGene 9600 / 9600 Plus Rotor-Gene 3000 / 6000 / Q SLAN® Real-Time PCR System StepOne™ Real-Time PCR System
<b>REQUIRED DETECTION CHANNELS</b>	FAM, HEX
<b>EXTERNAL QUALITY ASSESSMENT</b>	regularly tested by QCMD and Instand e.V. External Quality Assessment Panels - results at <a href="http://www.geneproof.com">www.geneproof.com</a>
<b>REGULATORY STATUS</b>	CE <sub>1023</sub> IVD

\* Validated instruments

PRODUCT NAME	TECHNOLOGY	ORDER NO.		
		25 REACTIONS	50 REACTIONS	100 REACTIONS
GeneProof Chlamydia trachomatis PCR Kit	real-time PCR	CHT/ISEX/025	CHT/ISEX/050	CHT/ISEX/100