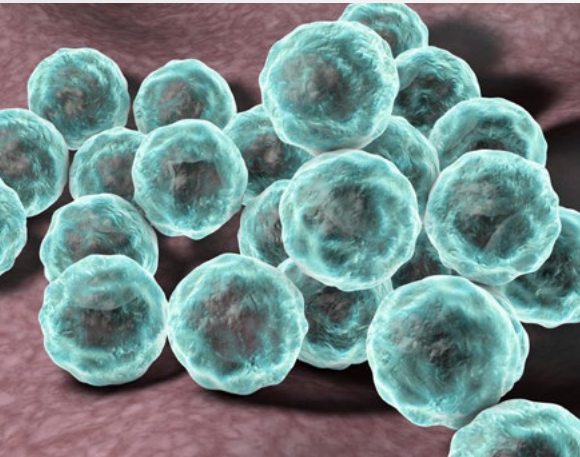




GeneProof

GeneProof *Chlamydia pneumoniae* PCR Kit



HIGH SENSITIVITY

- The best analytical sensitivity secured by targeting the *ompA* gene

CONTAMINATION ELIMINATION

- Ready-to-Use Master Mix contains Uracil-DNA glycosylase (UNG) and dUTPs eliminating possible contamination with amplification products

UNIVERSAL PCR PROFILE

- Enables rapid and sensitive detection of disease-causing agents of atypical pneumoniae
- Beneficial in combination with GeneProof *Mycoplasma pneumoniae* PCR Kit and GeneProof *Bordetella pertussis*/*parapertussis* PCR Kit
- Simplifies laboratory workflow



COMPATIBLE WITH A WIDE
RANGE OF REAL-TIME PCR
DEVICES



CERTIFIED
DIAGNOSTIC TEST



GeneProof Chlamydia pneumoniae PCR Kit

- + GeneProof Adenovirus PCR Kit
- + GeneProof Aspergillus PCR Kit
- + GeneProof Bordetella pertussis/parapertussis PCR Kit
- + GeneProof Enterovirus PCR Kit
- + GeneProof Chlamydia pneumoniae PCR Kit
- + GeneProof Legionella pneumophila PCR Kit
- + GeneProof Flu Multiplex PCR Kit
- + GeneProof Mycoplasma pneumoniae PCR Kit
- + GeneProof Mycobacterium tuberculosis PCR Kit

| | |
|--------------------------------------|---|
| TECHNOLOGY | real-time PCR |
| TYPE OF ANALYSIS | qualitative |
| TARGET SEQUENCE | specific conservative DNA sequence of a single-copy <i>ompA</i> gene |
| ANALYTICAL SPECIFICITY | <i>Chlamydia pneumoniae</i> , 100% |
| ANALYTICAL SENSITIVITY (LOD) | reaches up to 0.647 cp/μl with the probability of 95% (on Amplirun [®] Chlamydia pneumoniae DNA control, Vircell) |
| DIAGNOSTIC SPECIFICITY | 100% (CI _{95%} : 97.50% - 100.00%) |
| DIAGNOSTIC SENSITIVITY | 98.81% (CI _{95%} : 92.62% - 99.94%) |
| EXTRACTION/INHIBITION CONTROL | PCR inhibition and DNA extraction efficiency control (ISEX version) |
| VALIDATED SPECIMEN | BAL, sputum, swab |
| STORAGE | -20 ± 5 °C |
| VALIDATED EXTRACTION METHODS | croBEE NA16 Nucleic Acid Extraction System GeneProof PathogenFree DNA Isolation Kit |
| INSTRUMENTS | croBEE Real-Time PCR System* Applied Biosystems 7300 / 7500 Real-Time PCR System AriaMx Real-Time PCR System CFX Connect™ / CFX96™ / Dx Real-Time PCR Detection System LightCycler [®] 2.0 / 480 LineGene 9600 / 9600 Plus Mic qPCR Cyclers QuantStudio™ 3 / 5 Real-Time PCR System Rotor-Gene 3000 / 6000 / Q SLAN [®] Real-Time PCR System StepOne™ / StepOnePlus™ Real-Time PCR System |
| REQUIRED DETECTION CHANNELS | FAM, HEX |
| EXTERNAL QUALITY ASSESSEMENT | regularly tested by QCMD and INSTAND e.V. External Quality Assessment Panels - results at www.geneproof.com |
| REGULATORY STATUS | CE ₁₀₂₃ IVD |

*Validated instruments

| PRODUCT NAME | TECHNOLOGY | ORDER NO. | | |
|--|---------------|--------------|--------------|---------------|
| | | 25 REACTIONS | 50 REACTIONS | 100 REACTIONS |
| GeneProof Chlamydia pneumoniae PCR Kit | real-time PCR | CHP/ISEX/025 | CHP/ISEX/050 | CHP/ISEX/100 |